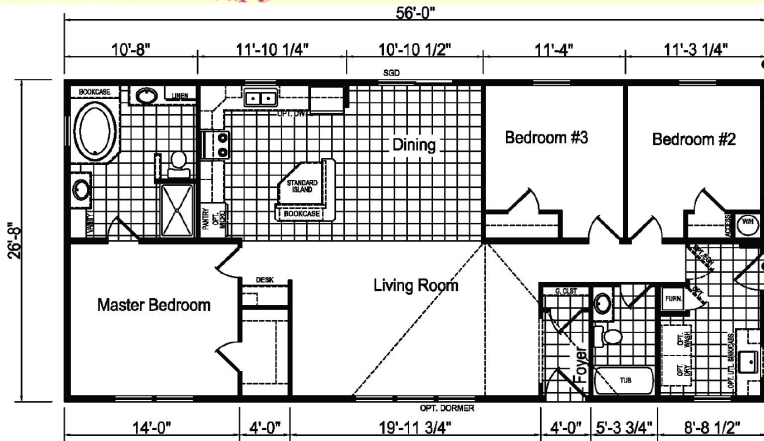
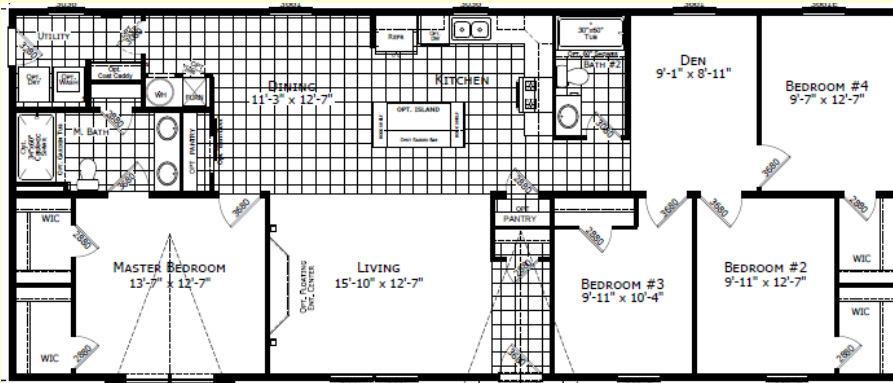


New models arriving early 2022!

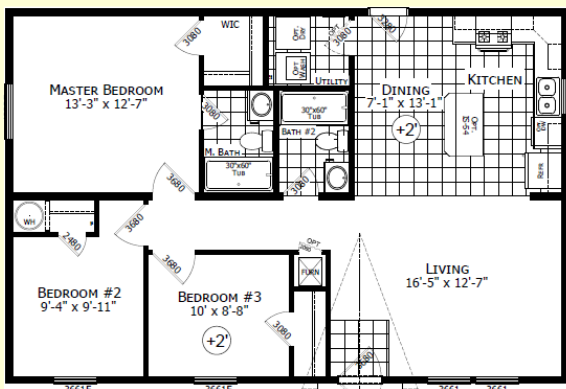


2N- 60J854 28x56 3 bedroom/ 2 bath

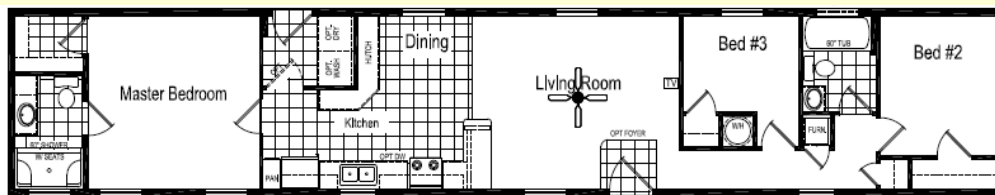
- Master suite with walk in closet, soaker tub with book shelves, linen and more
- Formal foyer with closet
- End entry with large versatile utility room
- Gourmet kitchen (we installed a different island) with pantry
- Office space outside master bedroom
- Open plan



- 9N- 46427 28x64 4 bedroom/ 2 bath
- This is a similar model as the previous home, but was such a great plan we brought it back!
- 4 spacious bedrooms with great closets
- Amazing foyer entry, linen and pantry!
- End entry with boot bench
- Expansive dining area that allows for a large family sized dining table
- Wonderful kitchen with choice of island
- This plan can also be a great home as a 3 bedroom and combine the den/ bed 4 for a second living room, ask how!



- 1N- 23801 28x40 (standard plan is 38') 3 bedroom/ 2 bath
- Open plan, could be end entry home if needed
- The original plan is 38' and 1 bathroom. We extended the model to 40' for a larger kitchen to allow for a dining area and island... and added a second full bath
- Washer/ dryer area
- Great home for just starting out- down sizing- 2nd home and more... Several different arrangements to make it perfect for you
- Would be beautiful with a full attached porch on the right gable end, too!



- 4N- 76F452 14x72 3 bedroom/ 2 full baths
- Master bedroom has private bath/ walk in closet
- Open design with hutch in DR for extra storage
- Separate utility area for washer/ dryer
- Several variations and sizes of this home available- just ask!

We build peace of mind into every home